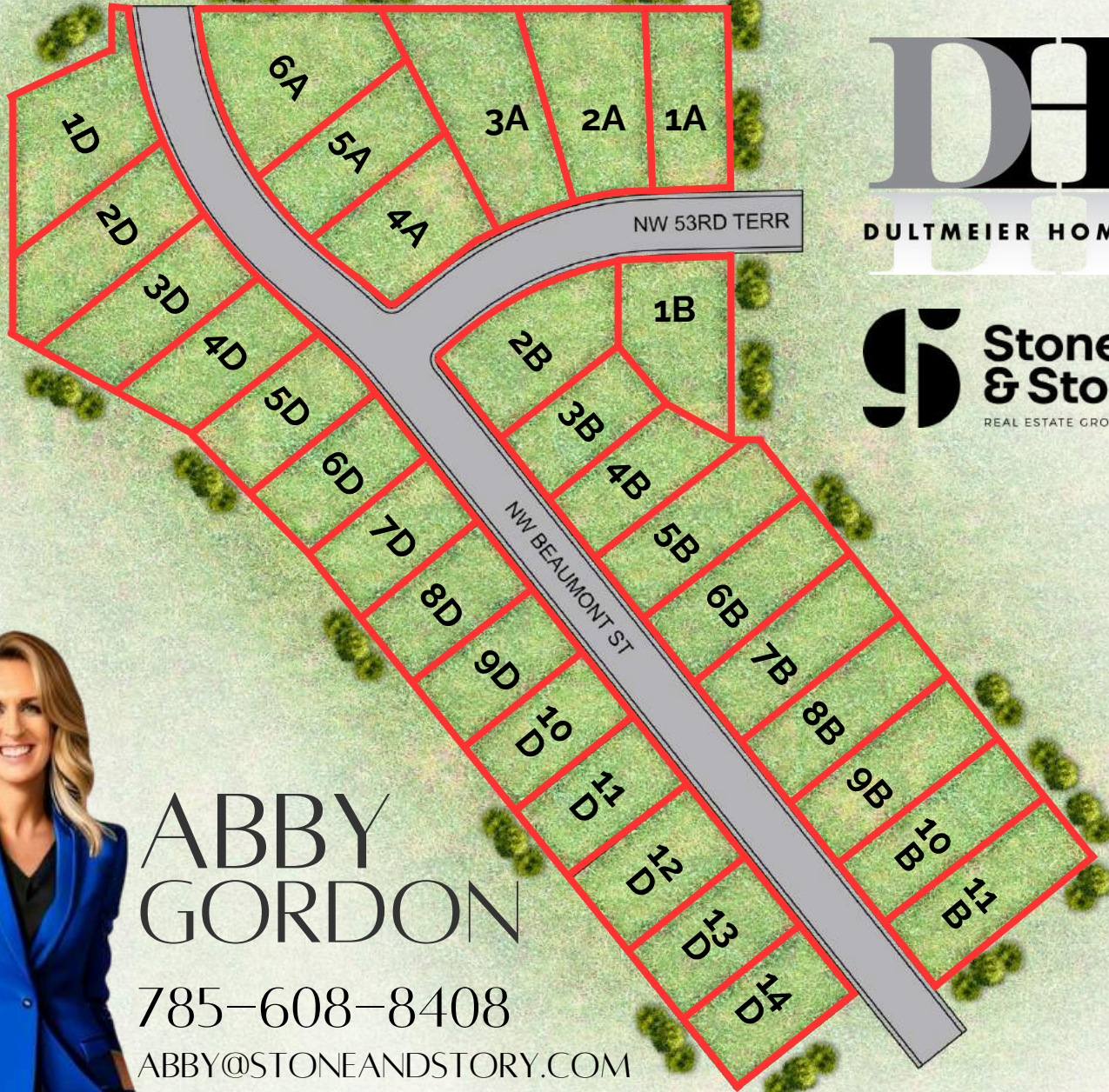




STERLING CHASE

RESERVE YOUR LOT TODAY

Welcome to Sterling Chase in NW Topeka, a community that combines spacious living with the beauty of the outdoors. Our neighborhood offers large lots, and a picturesque walking trail, and is celebrated for its easy access to local amenities. Here, you'll find quiet streets, a friendly atmosphere, and parks that both you and your furry friends will love. It's a place where neighbors become friends and everyday moments are cherished. Discover your dream home in Sterling Chase, where life is just as you've always imagined.



ABBY GORDON

785-608-8408

ABBY@STONEANDSTORY.COM

DREAM. BUILD. LOVE.

STERLING CHASE

LOT	PRICE
1D	\$49,900
2D	\$48,500
3D	\$44,500
4D	\$43,500
5D	\$43,500
6D	\$43,500
7D	\$43,500
8D	\$43,500
9D	\$43,500
10D	\$43,500
11D	\$43,500
12D	\$43,500
13D	\$43,500
14D	\$43,500
1A	\$49,900
2A	\$49,900

LOT	PRICE
3A	\$49,900
4A	\$49,900
5A	\$47,500
6A	\$49,900
1B	\$43,500
2B	\$44,900
3B	\$44,900
4B	\$47,500
5B	\$47,500
6B	\$48,500
7B	\$48,500
8B	\$48,500
9B	\$48,500
10B	\$48,500
11B	\$48,500

SPECIALS: \$210/MONTH

HOA: \$133/YEAR



FOR MORE INFORMATION: ABBY GORDON
ABBY@STONEANDSTORY.COM | 785-608-8408

DREAM. BUILD. LOVE.